

# Arthur Krupp®

TABLETOP EXCELLENCE

HORECA PRICEBOOK 2024





Arthur Krupp®

TABLETOP EXCELLENCE

**HORECA PRICEBOOK 2024**

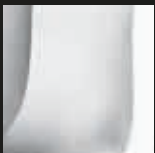
# 662-663 INOX STAINLESS STEEL

ARTHUR KRUPP

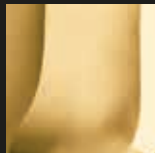


**Practical elegance. The brightness of the steel will get your guests carried away with its shining. Whether for breakfast, brunch or happy hour, during a business lunch or a romantic candlelight dinner, all table settings will be stylish and chic.**

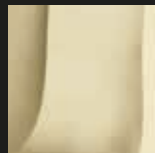
Pratica eleganza. La lucentezza dell'acciaio coinvolgerà i vostri ospiti con riflessi di luce. Ogni tavola sarà così valorizzata da uno stile ricercato in ogni momento della giornata: a colazione, per il brunch o l'aperitivo, durante i pranzi d'affari, nel corso di romantiche cene a lume di candela e nei dopocena tra amici.



SILVERPLATED



GOLD



CHAMPAGNE

**Special Finishing on demand**  
Finiture speciali su richiesta



**Coffee pot**

Caffettiera  
Kaffeekanne  
Cafetière  
Cafetera

art.	lt.	€
66201-03	0,3	37,80
66201-06	0,6	46,20
66201-09	0,9	54,90
66201-16	1,6	87,50



**Tea pot**

Teiera  
Teekanne  
Théière  
Tetera

art.	lt.	€
66208-03	0,3	38,60
66208-06	0,6	43,30
66208-09	0,9	61,80



**Creamer**

Cremiera  
Gießler  
Crémier  
Jarrita

art.	lt.	€
66204-01	0,15	21,80



**Milk pot**

Lattiera  
Milchgießer  
Pot à lait  
Jarra leche

art.	lt.	€
66206-03	0,3	25,60
66206-06	0,6	36,60
66206-09	0,9	45,90



**Water jug**

Brocca acqua  
Eiswasserkrug  
Carafe à eau  
Jarra agua

art.	lt.	€
66216-16	1,6	74,50

**With ice guard. – Con ferma ghiaccio.**



**Small bowl**

Ciotolina  
Schale  
Petite coupelle  
Bol

art.	dim. cm.	€
66290-25	11,5x9,5x3,5	22,70



**Sugar bowl with cover**

Zuccheriera c/coperchio  
Zuckerdose mit Deckel  
Sucrier avec couvercle  
Azucarero con tapa

art.	dim. cm.	€
66210-25	9,5x7x5	26,10



**Sugar bowl**

Zuccheriera  
Zuckerdose  
Sucrier  
Azucarero

art.	dim. cm.	€
66210-05	9,5x7x5	17,10





**Milk pot with lid**

Lattiera con coperchio  
Milchgießer mit Deckel  
Pot à lait avec couvercle  
Jarra leche con tapa

art.	lt.	€
66303-01	0,15	28,30
66303-03	0,30	33,60
66303-06	0,60	47,00



**Cappuccino milk pot**

Lattiera cappuccino  
Capuccino-Milchkanne  
Pot à cappuccino  
Jarra cappuccino

art.	lt.	€
66307-06	0,6	39,10
66307-09	0,9	45,10
66307-12	1,2	53,00



**Spoon holder**

Porta cucchiaini  
Kaffeelöffelbehälter  
Porte cuillères  
Porta cucharas

art.	Ø cm.	h.	€
66313-03	6	9	19,50



**Straw holder**

Porta cannucce  
Röhrchenbehälter  
Porte chalumeaux  
Porta canutillos

art.	Ø cm.	h.	€
66313-06	8	12	27,30



**Napkin holder**

Portatovaglioli  
Serviettenhalter  
Porte serviettes  
Servilletero

art.	dim. cm.	€
66391-00	10x3x8	7,60



**Tea bag caddy**

Portabustine tè  
Teebeutel-Halter  
Porte sachet de thé  
Contenedor sobres té

art.	dim. cm.	€
66375-00	12,5x7x4	20,40



**Sugar packet holder**

Portabustine zucchero  
Zuckerbeutelschale  
Conteneur à sucre  
Contenedor sobres azúcar

art.	dim. cm.	€
66374-00	12,5x6x4	18,70



**Small bowl**

Coppetta  
Schale, klein  
Petit bol  
Copa

art.	Ø cm.	h.	€
66388-10	8	3,5	11,70



**Oval bread basket**

Cesto pane, ovale  
Brotschale, oval  
Panier à pain, ovale  
Cesta pan, oval

art.	dim. cm.	€
66392-18	18x22x5	23,90
66392-22	22x16x5	31,00







**Jam/honey stand**  
Portamarmellata  
Ständer für Konfitürgläser  
Porte confitures  
Soporte confituras

art.	h.	€
66367-03	17,5	26,40



**Jam/honey stand**  
Portamarmellata  
Ständer für Konfitürgläser  
Porte confitures  
Soporte confituras

art.	h.	€
66367-06	15,5	37,80



**Pastry stand, 2 tiers**  
Alzata dolci, 2 piani  
Gebäckständer, 2-stufig  
Serviteur muet, 2 étages  
Soporte dulces, 2 niveles

art.	Ø cm.	h.	€
66339-02	12-16	20	73,30



**Glass coaster**  
Sottobicchiere  
Gläser-teller  
Sous-verre  
Platito bajo vasos

art.	Ø cm.	€
66359-10	10	11,20



**Bottle coaster**  
Sottobottiglia  
Flaschenteller  
Sous bouteille  
Platito bajo botellas

art.	Ø cm.	€
66359-12	12	17,80



**Bread dish**  
Piattino pane  
Brotteller  
Petite plat à pain  
Plato para pan

art.	Ø cm.	€
66392-16	16	20,50



**Show plate**  
Piatto presentazione  
Platzteller  
Plat de présentation  
Plato de presentación

art.	Ø cm.	€
66332-32	32	36,40



**Oil and winegar stand**  
Porta olio/acetato  
Essig u. Öl-Stand  
Porte huile et vinaigre  
Soporte para aceite y vinagre

art.	dim. cm.	€
66362-02	12,5x6x27	71,40



**Plate cover**  
Copripiatto  
Tellerlocke  
Cloche  
Cubreplatos

art.	Ø cm.	€
66340-19	19,0	39,70
66340-20	20,0	39,70
66340-24	24,0	44,90
66340-25	25,0	44,90
66340-26	26,0	44,90
66340-76	26,5	50,60
66340-27	27,0	50,60
66340-77	27,5	50,60





**Plate cover**  
 Copripiatto  
 Tellerlocke  
 Cloche  
 Cubreplatos

art.	Ø cm.	€
66340-28	28,0	50,60
66340-78	28,5	50,60
66340-29	29,0	50,60
66340-79	29,5	50,60
66340-30	30,0	50,60
66340-31	31,0	50,60
66340-81	31,5	53,20
66340-32	32,0	53,20
66340-83	33,5	53,20



**Cash tray with spring, s/s 18 Cr**  
 Vassoio conto con molla, inox 18 Cr  
 Rechnungstablett mit Feder, Edelstahl 18 Cr  
 Porte note avec pince, inox 18 Cr  
 Bandeja cuentas con resorte, acero 18 Cr

art.	dim. cm.	€
66318-29	19x14	10,40



**Cash tray, s/s 18 Cr**  
 Vassoio conto, inox 18 Cr  
 Rechnungstablett, Edelstahl 18 Cr  
 Plateau porte-monnaie, inox 18 Cr  
 Bandeja cuentas, acero 18 Cr

art.	dim. cm.	€
66318-19	19x14	10,30
66318-22	22x15	11,20



**Bill Holder, 18 Cr stainless steel**  
 Set porta conto, inox 18 Cr  
 Rechnungshalter, Edelstahl 18 Cr  
 Porte-addition, inox 18 Cr  
 Porta facturas, acero 18 Cr

art.	dim. cm.	€
66318-39	20x16	48,90



**Fish dish**  
 Piatto pesce  
 Fischplatte  
 Plat à poisson  
 Bandeja pescado

art.	dim. cm.	€
66345-55	55x23	36,70
66345-65	65x27	48,80
66345-74	74x29	57,10



**Tray with handles**  
 Vassoio con maniglie  
 Tablett mit Griffe  
 Plateau avec anses  
 Bandeja con asas

art.	dim. cm.	€
66324-40	40x26	53,00
66324-50	50x38	80,00
66324-65	65x50	134,40
66324-85	85x50	389,20
66324-99	100x50	514,00



**Tray**  
 Vassoio  
 Tablett  
 Plateau  
 Bandeja

art.	dim. cm.	€
66320-28	28x20	24,40
66320-35	35x30	31,80
66320-40	40x26	32,90
66320-50	50x38	62,70
66320-65	65x50	113,30
66320-85	85x50	351,80
66320-99	100x50	418,90



**Tray, round**  
 Vassoio tondo  
 Tablett, rund  
 Plateau rond  
 Bandeja redonda

art.	Ø cm.	€
66326-30	30	29,50
66326-35	35	33,30
66326-40	40	38,40
66326-60	60	156,10
66326-80	80	346,40



**Oval meat dish**  
 Piatto ovale  
 Bratenplatte, oval  
 Plat ovale  
 Bandeja oval llana

art.	dim. cm.	€
66325-30	30x19	24,10
66325-35	35x22	27,80
66325-41	41x26	32,30
66325-46	46x29	36,20
66325-54	54x37	51,30
66325-85	85x58	293,30
66325-99	100x68	379,90

# Arthur Krupp®

**SAMBONET PADERNO INDUSTRIE S.P.A.**

Via Giovanni Coppo, 1C - 28060 Orfengo (NO) - Italy

Ph. +39 0321 1916 601

Fax +39 0321 1916 890

[horeca@paderno.it](mailto:horeca@paderno.it)

[horeca@sambonet.it](mailto:horeca@sambonet.it)

**ROSENTHAL SAMBONET USA LTD.**

685 Route 10 - Randolph NJ 07869 - USA

Ph. +1 201 804 8000

Fax +1 201 842 9195

[info@rosenthalusa.com](mailto:info@rosenthalusa.com)

[www.rosenthal-hotel-restaurant.com](http://www.rosenthal-hotel-restaurant.com)



ARCTURUS GROUP

XE2332 - Ed. 10/2023

8 014808 501128

